

INSTRUCTION MANUAL



Raven EDGE/GPRS EDGE Airlink Cellular Modem

March 2008



Copyright © 2008
Campbell Scientific (Canada) Corp.

WARRANTY AND ASSISTANCE

This equipment is warranted by CAMPBELL SCIENTIFIC (CANADA) CORP. ("CSC") to be free from defects in materials and workmanship under normal use and service for **twelve (12) months** from date of shipment unless specified otherwise. ***** **Batteries are not warranted.** ***** CSC's obligation under this warranty is limited to repairing or replacing (at CSC's option) defective products. The customer shall assume all costs of removing, reinstalling, and shipping defective products to CSC. CSC will return such products by surface carrier prepaid. This warranty shall not apply to any CSC products which have been subjected to modification, misuse, neglect, accidents of nature, or shipping damage. This warranty is in lieu of all other warranties, expressed or implied, including warranties of merchantability or fitness for a particular purpose. CSC is not liable for special, indirect, incidental, or consequential damages.

Products may not be returned without prior authorization. To obtain a Return Merchandise Authorization (RMA), contact CAMPBELL SCIENTIFIC (CANADA) CORP., at (780) 454-2505. An RMA number will be issued in order to facilitate Repair Personnel in identifying an instrument upon arrival. Please write this number clearly on the outside of the shipping container. Include description of symptoms and all pertinent details.

CAMPBELL SCIENTIFIC (CANADA) CORP. does not accept collect calls.

Non-warranty products returned for repair should be accompanied by a purchase order to cover repair costs.



CAMPBELL SCIENTIFIC
C A N A D A C O R P .

11564 - 149 street - edmonton - alberta - T5M 1W7
tel 780.454.2505 fax 780.454.2655

www.campbellsci.ca

Raven EDGE Table of Contents

PDF viewers note: These page numbers refer to the printed version of this document. Use the Adobe Acrobat® bookmarks tab for links to specific sections.

1. General Description	1
2. Establish Cellular Service	1
2.1 Raven EDGE Cellular Coverage/Service Requirements	1
3. Specifications	2
3.1 Raven EDGE Specifications	2
4. Configuration	2
4.1 Base Station Requirements for Raven EDGE	2
4.2 Datalogger Site Equipment	2
4.3 Power Considerations	6
5. Program the Raven EDGE Modem	6
5.1 Using ACE Manager to Configure the Modem	7
5.2 Dynamic IP Address	10
6. LoggerNet/PC400W Software Setup	11
7. Troubleshooting	13
7.1 Check the Modem Configuration	13
7.2 Verify Connections at the Datalogger	16
7.3 LoggerNet/PC400W Device Map	16
7.4 Using ACE Manager to Check Modem Communications with Datalogger	16
Appendices	
A. ACE Manager Setup without Template File	A-1
B. Installation of SIM Card in the Raven EDGE	B-1
C. Configuring the Raven for PPP	C-1

Figures

4.2-1. Modem Interface Options	4
4.2-2. Antennas for Use with the Raven Modems	6
7-1. Wireless Ace status page showing communications with modem	17
B-1. Modem Back	B-1
B-2. Modem Partially Slid from Case	B-1
B-3. Tray Button	B-2
B-4. Empty SIM Tray	B-2
B-5. SIM Tray with a SIM	B-2
B-6. Inserting the SIM	B-2

Raven EDGE GPRS/EDGE AirLink Cellular Modem

1. General Description

This manual provides information for interfacing the AirLink Raven EDGE cellular modem to Campbell Scientific dataloggers. An AirLink CD ships with the modem that includes AirLink manuals and software utilities. AirLink manuals referenced in this manual include:

ACE Manager_UserGuide2.00.pdf
Raven_EDGE_Userguide.pdf
Raven_EDGE_Quickstart.pdf

The Raven EDGE digital cellular modem is manufactured by AirLink for use on the Rogers General Packet Radio Service (GPRS) and EDGE networks. The modem is accessed through the Internet using TCP/IP communications protocol using a Static or Dynamic IP address.

- A Static IP address is permanently assigned to a particular account and will always be used whenever the Raven connects to the Internet.
- A Dynamic IP address is assigned on a “need to have” basis. A dynamic IP address is used with a service such as IP Manager (Section 5) to translate a dynamic IP address to a domain name, so that the Raven can be contacted as if it had a static IP.

2. Establish Cellular Service

2.1 Raven EDGE Cellular Coverage/Service Requirements

What you need:

Rogers GPRS/EDGE coverage at the datalogger site (for a coverage map refer to: <http://www.your.rogers.com/store/wireless/coverage/info.asp>).

GPRS/EDGE account established with Rogers.

To setup an account with Rogers:

Call (1-866-931-3282) and ask for the “Data Plan”.

When setting up the account, ask to have “VPN.com” added to the account. VPN.com configures the account for the “Internet” Access Point Name (APN), and the device to “Mobile Terminated”, which makes the modem accessible by LoggerNet over the internet. If VPN.com was not added when the account was setup, it can be added later. The APN name must also be programmed into the modem (Section 5.1).

Rogers will provide a SIMM card for each modem. In most cases the SIM can be picked up at a local Rogers store. The SIMM card must be installed inside of the modem as described in Appendix B.

3. Specifications

3.1 Raven EDGE Specifications

AirLink Raven Model E3214 GPRS-EDGE modem

Network: 1900/850 MHz

Transmit Frequency: 1850-1910 MHz and 824-849 MHz

Transmit Power: 1.0 W for 1900 MHz; 2.0 W for 850 MHz

Receiver Frequency: 1930-1990 MHz and 869-894 MHz

Modes Supported: GPRS and EDGE

Throughput: up to 40 kbps

RS-232 Data Rates: 1200 bps to 115.2 kbps

Input Voltage: 10 to 28 Vdc

Input Current: 20 to 250 mA

Typical Current Drain at 12 Vdc: 20 mA dormant connection (idle for 10 to 20 seconds), 130 mA transmit/receive

Operating Temperature Range: -30° to +70°C (10% duty cycle limit above 60°C)

Operating Humidity: 5% to 95% non-condensing

Serial Protocols: AT Commands, PPP, SLIP, UDP, TCP

Serial Interface: RS-232

RF Antenna Connector: 50 Ohm TNC

Status LEDs: Power, Channel Acquired, Link Status, Network Registration, RSSI, Transmit/Receive, Service

Dimensions: 3"W x 1"D x 5.1"L (5.8"L w/connector), 7.6 W x 2.5 D x 13 L cm (14.7 L cm w/connector)

Weight: <1 lb (<0.5 kg)

4. Configuration

4.1 Base Station Requirements for Raven EDGE

PC running Campbell Scientifics' LoggerNet or PC400 software, with access to the internet.

4.2 Datalogger Site Equipment

- Raven modem with power cable (included with modem).
- Datalogger—21X, CR510, CR10(X), CR23X, CR7, CR1000, CR5000, CR3000, CR800.

- SC105 or SC932A Interface—connects the modem to any dataloggers' CS I/O port.

NOTE

If you have a black SC12 cable that is not Rev 1 or newer (as indicated on cable), it is a CS I/O cable only and will not work for RS-232. Connect the black SC12 cable between the datalogger and the SC932A. Use a 9-pin serial cable or a blue ribbon cable between the phone and the SC932A.

- PN 18663 Null Modem Cable—connects the modem to the CR23X, CR3000, CR800, CR2XX, CR1000 or CR5000 RS-232 port.



SC105 interface connects the modem to a datalogger's CS I/O port; recommended for dataloggers with the PakBus Operating System.



SC932A interface connects the modem to the CS I/O port; recommended for dataloggers with the Mixed-Array Operating System.



PN 18663 null modem cable connects the modem to a datalogger's RS-232 port (not compatible with the 21X, CR510, CR10X, or CR7 dataloggers).

FIGURE 4.2-1. Modem Interface Options.

- PN L14394 Raven Mounting Kit—includes mounting hardware for securing the modem to below referenced environmental enclosure and a 9-pin male to 9-pin female cable.
- Antenna—the following antennas are available from Campbell Scientific. Contact a Campbell Scientific Applications Technician for help in determining the best antenna for your application.
 - The **C2100** 3 dBd omnidirectional antenna. This antenna is dual band, covering both the 800 MHz and 1.9 GHz bands, and is strongly recommended where cellular coverage is strong. The C2100 includes 10 feet of cable fitted with a TNC male connector for attachment to the Raven, and a mount for attaching the antenna to a mast, post, or crossarm up to 1.5" (3.8 cm) in diameter.
 - The **L14454** 9dBd Yagi Antenna is a higher gain antenna that should be "aimed" at the service provider's antenna. The L14454 includes 10 feet of cable fitted with a TNC male connector for attachment to the Raven EDGE modem, and a bracket/u-bolt assembly for attaching the antenna to a mast or post. This antenna is recommended for fringe areas that require a higher gain antenna.
 - The **L14453** Half-Wave Dipole Whip Antenna is a lower gain antenna used in transmitting short distances. It is an 800 MHz cellular antenna that terminates in a TNC Female connector for attachment to the Raven EDGE modem. This antenna is intended for use inside the enclosure. Please note that the backplate of the enclosure is a grounded plane. If it is interposed between the antenna and the cell tower, it may attenuate the strength of the transmission signal. Simply turning the enclosure 90 to 180 degrees on its mounting mast may solve weak transmission issues.



PN C2100 3 dBd Omni Directional Antenna



PN L14454 9dBd Directional Yaggi Antenna



PN L14453 Half-Wave Dipole Whip Antenna

FIGURE 4.2-2. Antennas for Use with the Raven Modems

- Power Supply (see power considerations).
- Environmental Enclosure— ENC 10/12, ENC 12/14, or ENC 16/18.

4.3 Power Considerations

- A power cable included with the modem connects to the datalogger's 12 V or switched 12 V terminal. Connection to the switched 12 V terminal allows the datalogger to switch power to the modem during scheduled transmission intervals if desired.
- When using the switched 12 V terminal, the modem can typically be powered with a BP12 battery, CH100 charger/regulator, and MSX10 solar panel.

5. Program the Raven EDGE Modem

The following software is used to program the modem:

AirLink’s ACE Manager software utility, which is used to configure settings in the modem and to load the GPRS/EDGE template file. The ACE Manager utility can be found on the CD included with the modem, or can be downloaded from AirLink’s website: www.airlink.com/support.

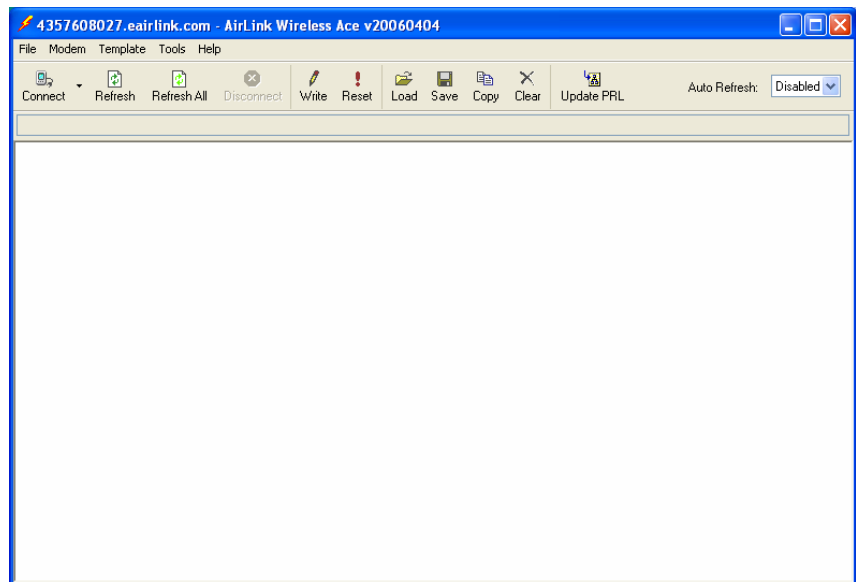
Campbell Scientific’s “Raven GPRS/EDGE Template 115200” file for dataloggers that support 115200 baud (e.g. CR1000), or “Raven GPRS/EDGE Template 9600” file for dataloggers that support a maximum baud rate of 9600 (e.g. CR10X). The template file configures the modem to be compatible with CSI dataloggers. The template files are available from Campbell Scientific’s Website: www.campbellsci.ca/download.html

5.1 Using ACE Manager to Configure the Modem

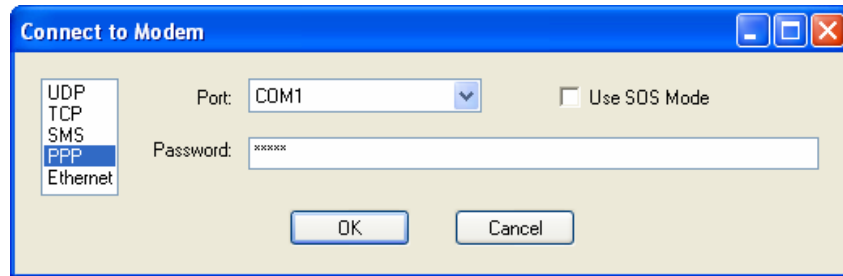
To install ACE Manager from the AirLink CD, click on the “ACE Manager” link under “Modem Utilities” and follow the prompts. Once the application has been installed, it can be run from the Windows Start menu or from the icon on the desktop.

Connect the Raven to a serial RS232 port on the PC with a direct RS-232 cable. Also connect the antenna, and 12 V power.

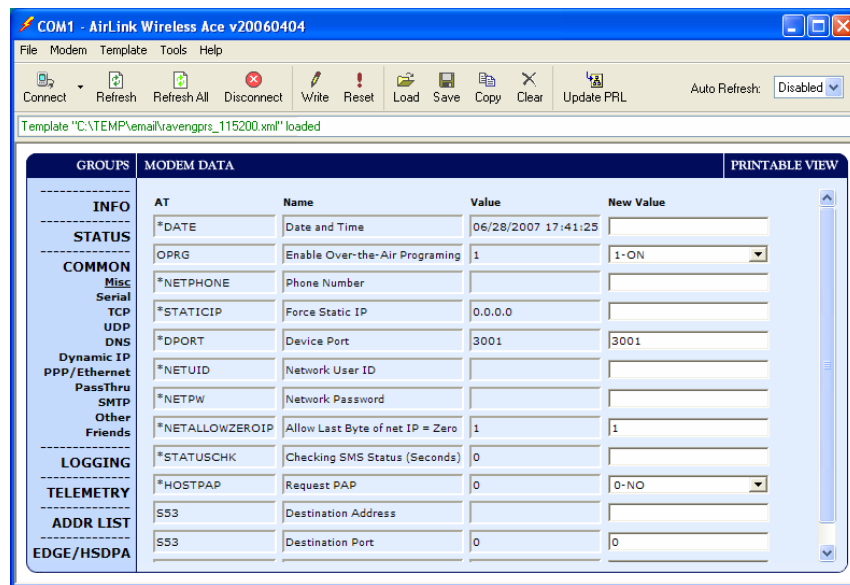
Run ACE Manager to get the following screen:

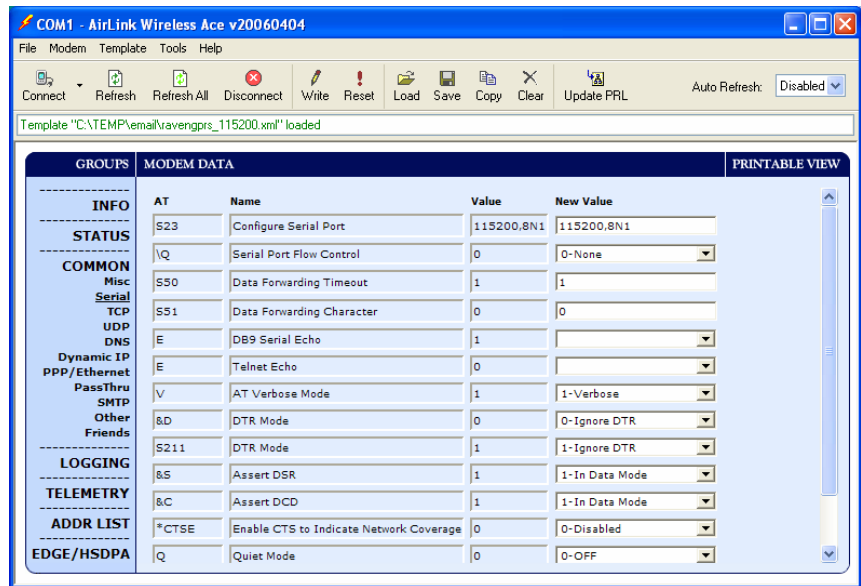


Click the **Connect** icon in the Configuration Panel to open the connection options dialogue box. Select PPP, and the COM port the modem is connected to. Do not change the Password (the default password is 12345). Click OK to continue.



Click the **Load** icon in the Configuration panel. When prompted for a template file name, select “ravengprs_115200.xml” for dataloggers that support 115200 baud (e.g. CR1000), or “ravengprs_9600.xml” for dataloggers that support a maximum baud rate of 9600 (e.g. CR10X). The template file configures the modem to be compatible with CSI dataloggers. Template files are available from Campbell Scientific’s Website: www.campbellsci.ca/download.html

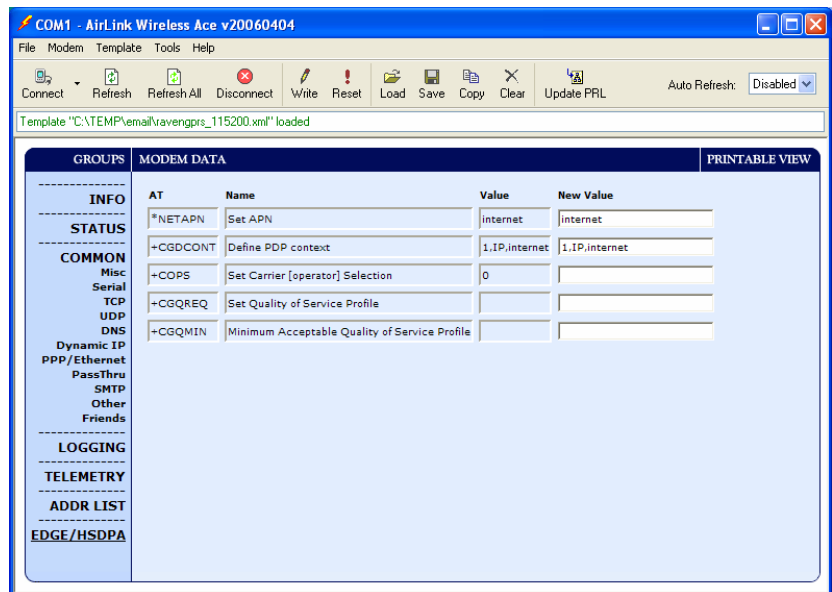




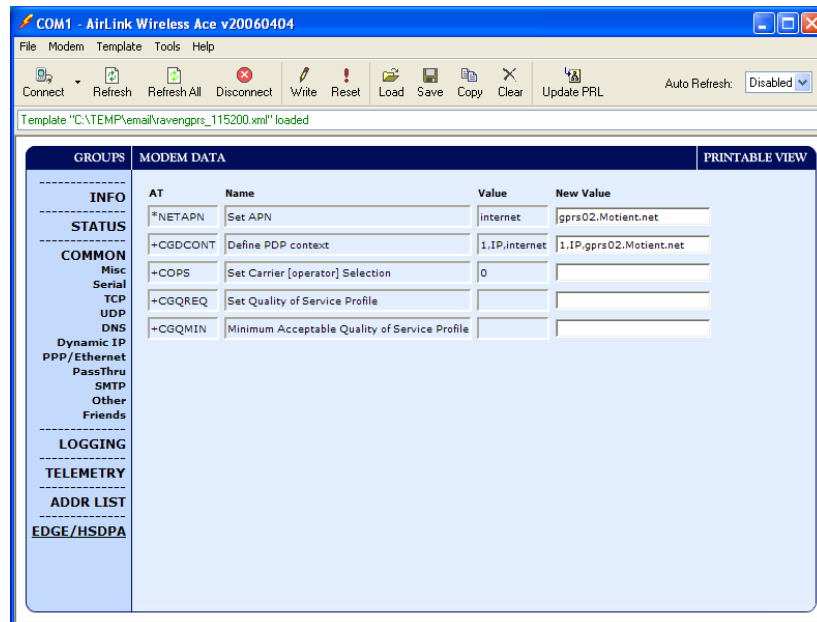
NOTE

Baud rate can be changed from 9600, to a higher baud rate supported by the datalogger (e.g., 115200 for a CR1000).

Click on **EDGE/HSDPA** Group to get the following screen:



A Rogers account with VPN.com is configured for an Access Point Name (APN) = "VPN.com". Enter "VPN.com" in the New Value field for "*NETAPN" and "1,IP, VPN.com" in the New Value field for +CGDCONT.



After the template file has been loaded, and the APN entered, click the **Write** icon to save the changes in the modem.

Click the **Reset** icon to restart the modem. The other ways to reset the modem are by pressing the reset button on the front of the modem or removing the power from the modem.

Click the **Disconnect** icon to terminate communications with the modem.

NOTE

Unless you click the **Write** command, changes made in the New Value field will not be sent to the modem. For some changes (e.g., baud rate) you must also **Reset** the modem before the changes will take effect.

5.2 Dynamic IP Address

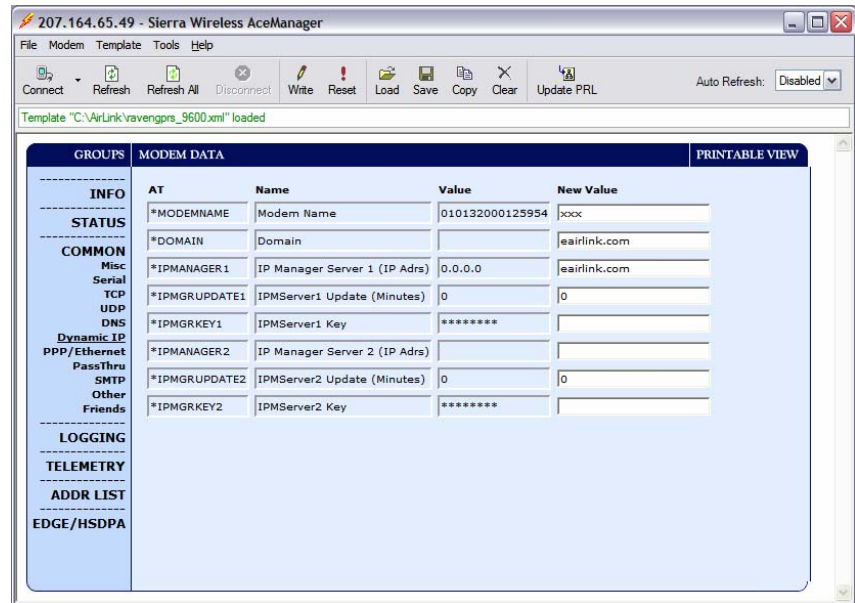
“Data Plan” accounts setup through Rogers are provided with a Dynamic IP address. Dynamic IP addresses are granted only when the modem is connected and can change each time the modem reconnects to the network.

Sierra Wireless/Airlink offers a free Dynamic DNS service that translates a dynamic IP address to a fully qualified domain name, so that the modem can be contacted by name as if it had a Static IP.

The domain name used in Loggernet is: xxx.eairlink.com, where xxx is the 10 digit phone number associated with the account and eairlink.com is Sierra Wireless/Airlink DDNS server.

The following setting changes are required in the modem template.

Enter the 10-digit phone number that is associated with the account into the *MODEMNAME field as shown in the Dynamic IP menu as well as airlink.com in the *DOMAIN and *IPMANAGER1 fields if they are already not filled in.

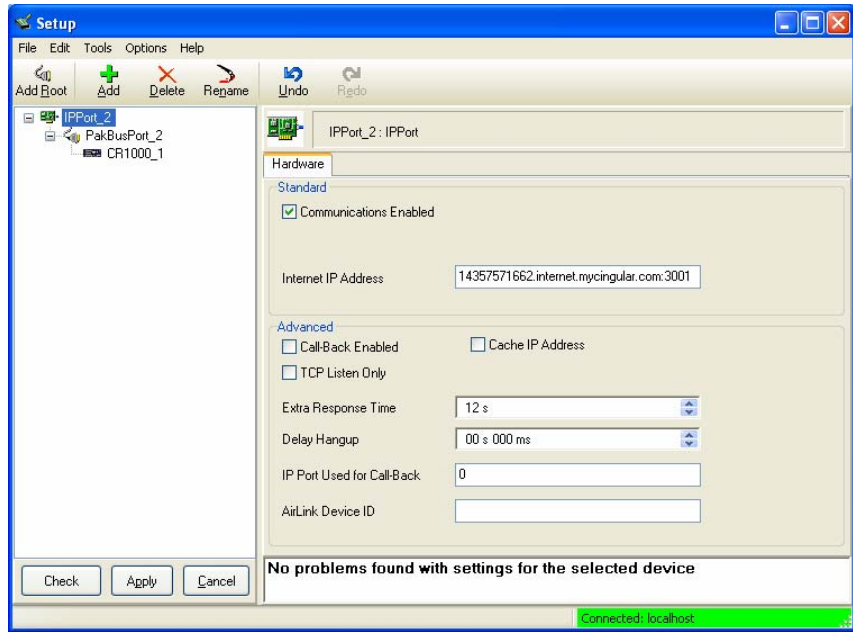


6. LoggerNet/PC400W Software Setup

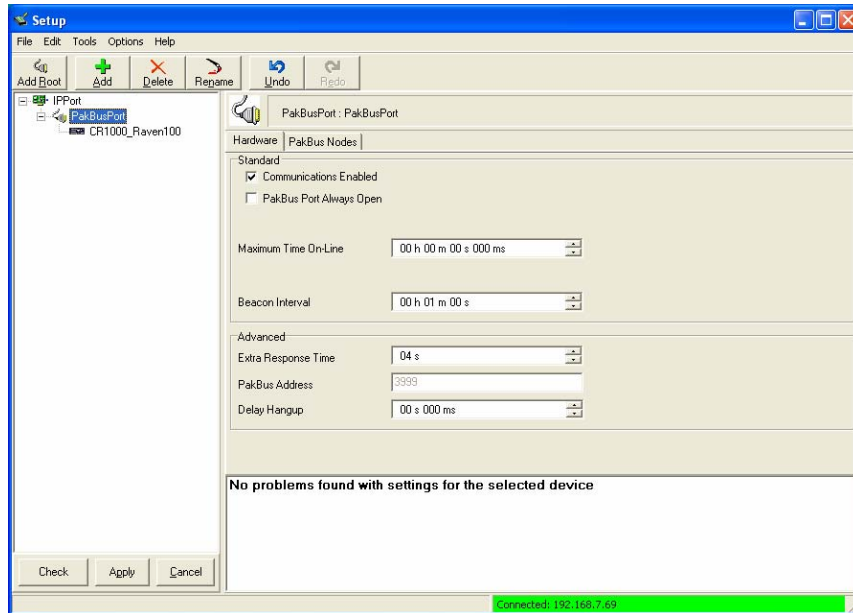
The Device Map is configured from the “Setup” button on the LoggerNet/PC400W Toolbar. Configure the Device Map as described below.

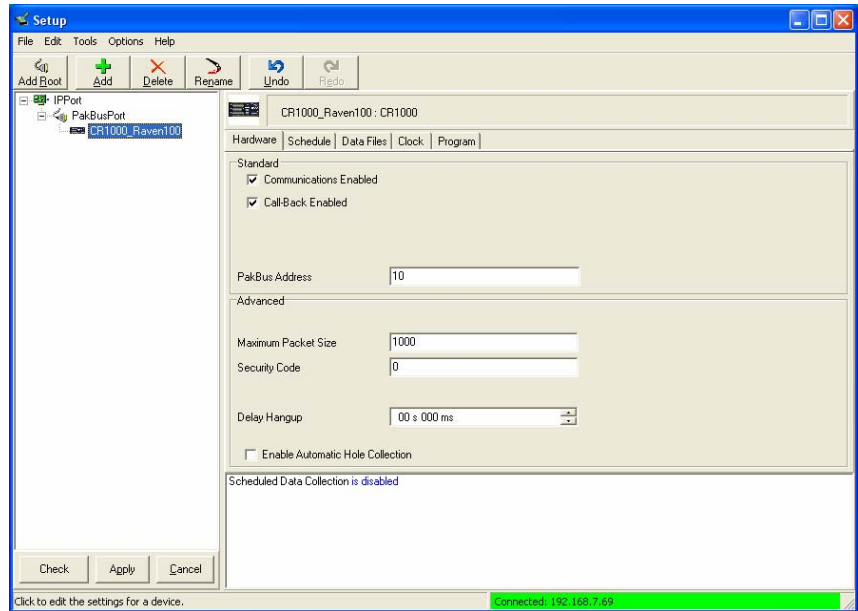
1. Select Add Root | IPPort.
2. Add a datalogger to the IPPort (PakBus dataloggers, e.g. the CR1000, require a PakBusPort).
3. On the IPPort page, add the IP address/domain name and the Port number (the Raven template file configures the port to be 6785).
4. For PakBus dataloggers, leave the default settings on the PakBusPort page (Extra Response Time may be needed).
5. For PakBus dataloggers, set the PakBus address to match that of the datalogger (default address in the datalogger is 1).

LoggerNet Device Map



NOTE Preceding zeros are not entered in the Internet IP Address (e.g. 070.218.074.247 is entered as 70.218.74.247).





7. Troubleshooting

If LoggerNet/PC400W software is unable to establish a connection with the modem:

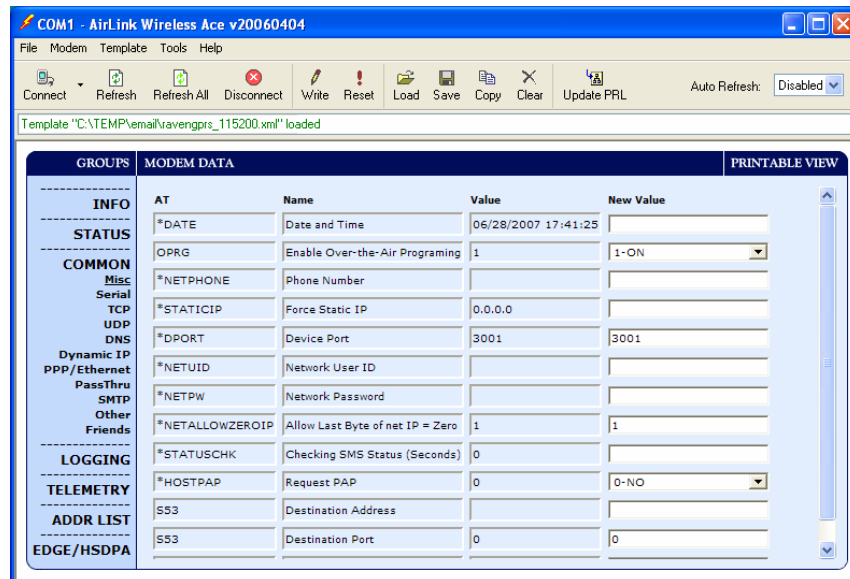
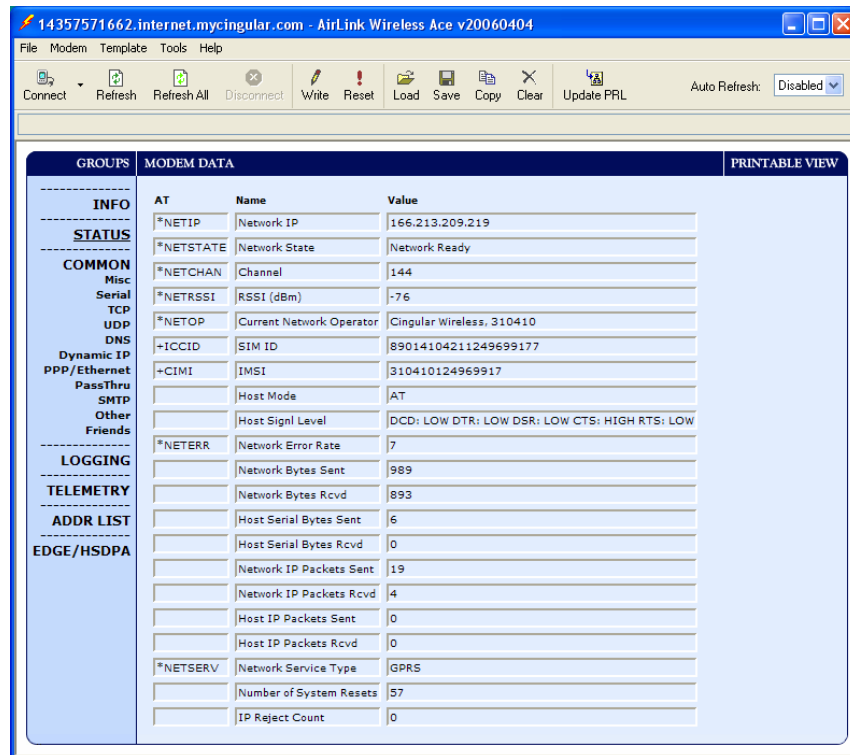
7.1 Check the Modem Configuration

Check the EDGE cellular account information, and verify there is EDGE /GPRS coverage at the site. Dynamic IP accounts require a Dynamic Domain Name Server (DDNS) (Section 5).

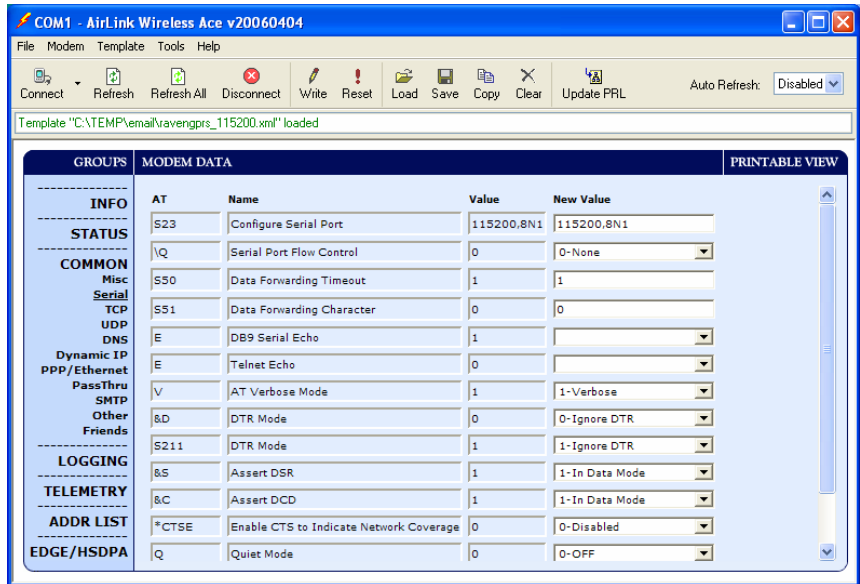
The modem has to be configured using ACE Manager as described in Section 5.

Modem settings have to be changed, and the APN number entered, using ACE Manager (Section 5). After the Raven EDGE template file has been loaded, you can verify settings in the Status, Misc, Serial, and EDGE /HSDPA groups have been configured as shown below.

Network State should be “Network Ready”. Signal strength (RSSI) should be -60 to -85. The IP address will change for Dynamic IP accounts.



The Device Port gets changed from the default 12345 when the template file is loaded into the modem (Section 5). The Device Port number gets entered with the IP address in LoggerNet (Section 6).

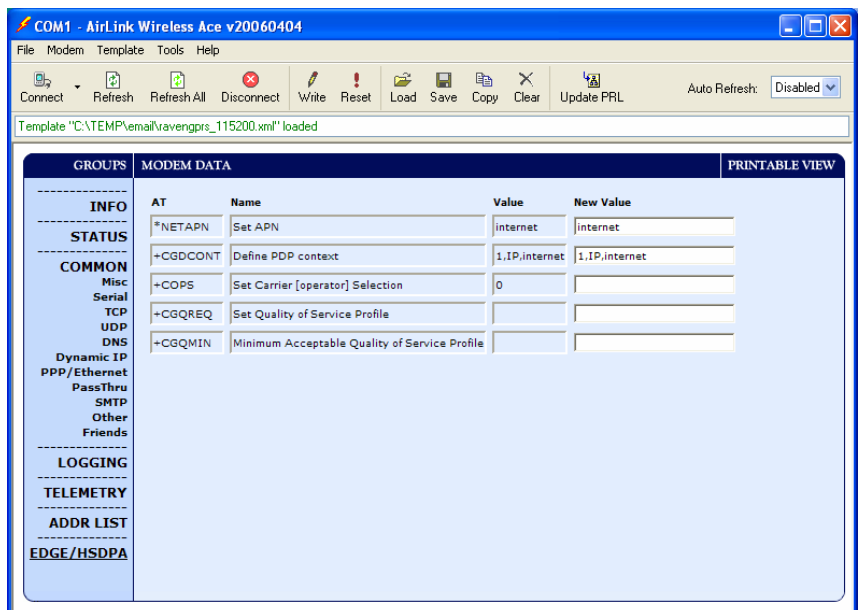


The “Raven GPRS/EDGE Template 9600” template file sets the baud rate to 9600, which is the maximum baud rate for the CR10X and older dataloggers. For newer dataloggers, the baud rate can be changed to the highest baud rate supported by the datalogger (e.g. 115200 baud for the CR1000).

If an SC105 interface is used, its default baud rate of 9600 will have to be changed to match the baud rate of the modem (using CSI’s DevConfig utility).

NOTE

Baud rate changes require the modem to be reset before the change takes affect. Click the **Reset** icon in ACE Manager to the reset the modem and implement the change.



Verify the APN has been entered in the NETAPN and +CGDCONT fields as shown above (where VPN.com is the APN).

7.2 Verify Connections at the Datalogger

Verify the modem is connected to 12 V and the Pwr led is on (green).

Check the Reg light on the modem. The Reg light should be solid green, which indicates the modem is registered with the cellular network.

Make sure the antenna is properly connected and oriented. Signal strength should be the -60 to -80.

An SC932A or SC105 interface is required to connect the modem to a datalogger's CSI/O port. The default settings for SC105 can be used with the Raven EDGE when the modem is configured for 9600 baud (baud rate set by the template file). If the baud rate is changed in the modem, the baud rate in the SC105 will have to be changed to match that of the modem (SC105 settings can be changed using CSI's DevConfig utility).

Make sure the modem is connected to the "DCE Device" connector on the SC932A, or the "Modem" connector on the SC105.

A null modem cable is required to connect the modem to a datalogger's RS-232 port. No other interface is required.

7.3 LoggerNet/PC400W Device Map

The IP address and Device Port settings are entered in LoggerNet as described in Section 6.

Make sure the port number at the end of the IP address matches the port number of the modem. The template file sets the port number to 6785.

Try adding a few seconds (no more than five seconds) of extra response time to the datalogger or PakBus port.

For a PakBus datalogger, verify the PakBus address in the setup screen matches that of the datalogger.

For networks with multiple PakBus ports, uncheck the 'PakBus Port Always Open' options on all PakBus ports.

7.4 Using ACE Manager to Check Modem Communications with Datalogger

The modem's "Host Serial Bytes Sent" and "Host Serial Bytes Received" windows can indicate whether or not the modem is communicating with the datalogger.

Establish a connection with the modem through the cellular network using ACE Manager (click on the Modem menu item, Connect, UDP. Enter the IP address, and click OK). Go to the Status group and note the "Host Serial Bytes Sent" and "Host Serial Bytes Received" values (Figure 7-1). Try connecting with the datalogger using LoggerNet/PC400W. If a connection cannot be established, close LoggerNet and reconnect with ACE Manager and compare the current values with the previous values.

If the values are the same, the modem is not attempting to make a connection with the datalogger. Check that the Raven EDGE template file has been loaded.

If the “Host Serial Bytes Sent” increased, the modem attempted to connect to the datalogger, but the response from the datalogger did not make it back to the modem. Check the interface between the modem and the datalogger.

If both values incremented, the modem and the datalogger are communicating. Try adding some extra response time in LoggerNet.

NOTE

Baud rate changes require the modem to be reset before the change takes affect. Click the Reset icon in ACE Manager to the reset the modem and implement the change.

GROUPS	MODEM DATA	PRINTABLE VIEW
AT	Name	Value
INFO		
*NETIP	Network IP	166.213.209.219
STATUS		
*NETSTATE	Network State	Network Ready
COMMON		
*NETCHAN	Channel	144
*NETRSSI	RSSI (dBm)	-76
*NETOP	Current Network Operator	Cingular Wireless, 310410
+ICCID	SIM ID	89014104211249699177
+CIMI	IMSI	310410124969917
	Host Mode	AT
	Host Signal Level	DCD: LOW DTR: LOW DSR: LOW CTS: HIGH RTS: LOW
*NETERR	Network Error Rate	7
LOGGING		
	Network Bytes Sent	989
	Network Bytes Rcvd	893
TELEMETRY		
	Host Serial Bytes Sent	6
	Host Serial Bytes Rcvd	0
ADDR LIST		
	Network IP Packets Sent	19
	Network IP Packets Rcvd	4
	Host IP Packets Sent	0
	Host IP Packets Rcvd	0
EDGE/HSDPA		
*NETSERV	Network Service Type	GPRS
	Number of System Resets	57
	IP Reject Count	0

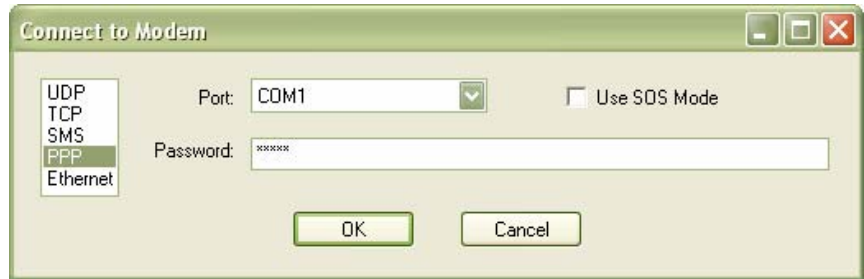
FIGURE 7-1. ACE Manager status page showing communications with modem.

Appendix A. ACE Manager Setup without Template File

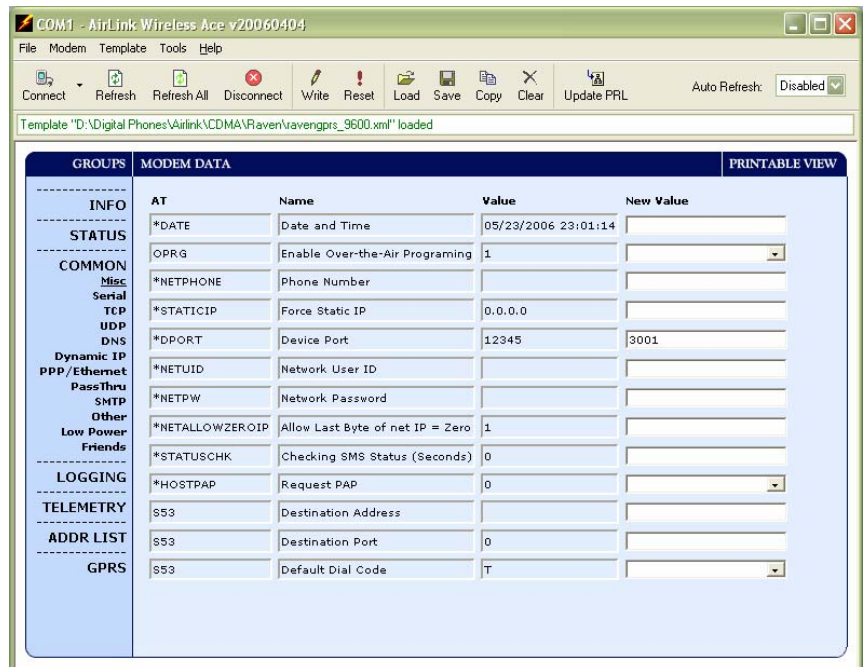
ACE Manager is used to program settings in the Raven EDGE modem to make the modem compatible with CSI dataloggers. Airlink EDGE template files to send the modems are available on our website (<http://www.campbellsci.ca/download.html>). The procedure for sending the template files is described in Section 5.

When the template files are not available, ACE Manager can be used to change the settings described below.

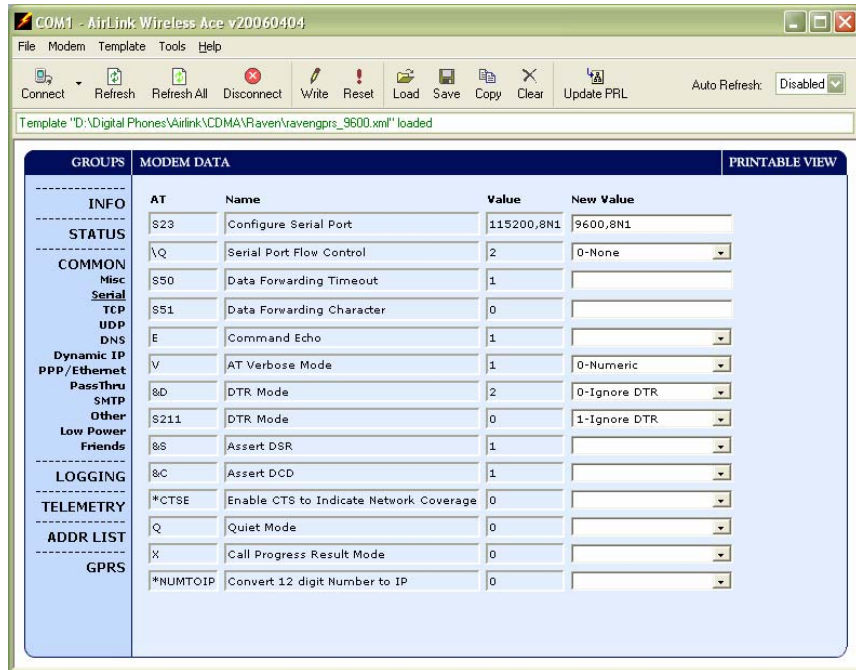
For a direct connection on a COM port use PPP.



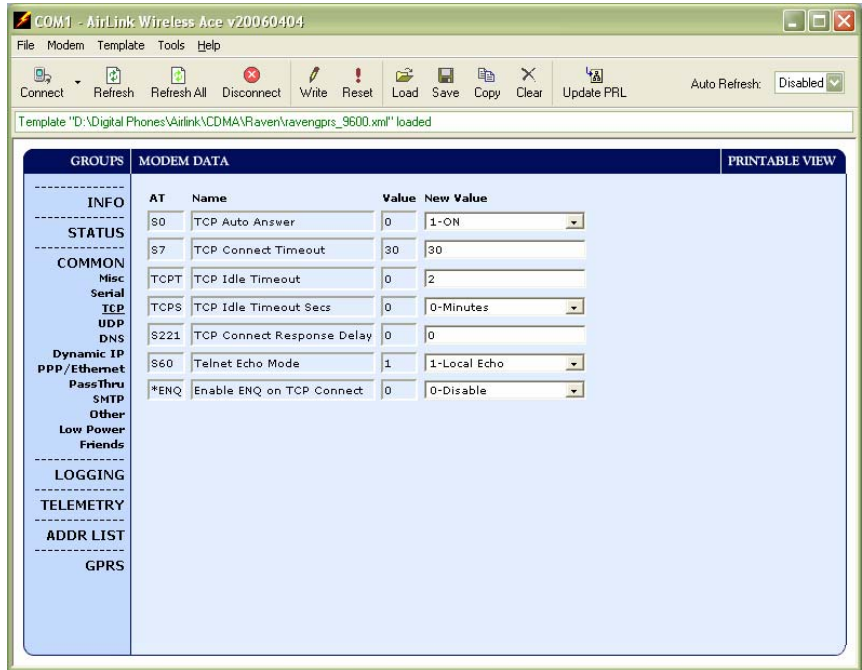
Make a note of the Device port (*DPORT). The default is 12345 and we use 6785 in our template. Any valid port can be used. This is the port number used in LoggerNet to get to the datalogger.



- S23 – Configure Serial Port – The baud rate needs to be configured to match a valid datalogger baud rate. For a CR10X: 9600,8N1 and for a CR1000: 115200,8N1.
- \Q – Serial Port Flow Control – This should be set to None.
- V – AT Verbose Mode – Set this to Numeric.
- &D – DTR Mode – Set to Ignore DTR
- S211 – DTR Mode – Set to Ignore DTR



- S0 – TCP Auto Answer – Set to On
- TCPT – TCP Idle Timeout -- Set to a reasonable value like 2 min.



Appendix B. Installation of SIM Card in the Raven EDGE

The Subscriber Identity Module (SIM) in the Raven is a smartcard securely storing the key identifying a mobile subscriber. Generally, you will only need to install the SIM once in the life of the modem.

Installing the SIM

To install the SIM, you will only need a small phillips head screw driver.

Opening the Case

1. Unplug the modem power and all cables.
2. Using a small phillips head screw driver, remove the two screws on the back of the modem.



FIGURE B-1. Modem Back

3. Slide the casing off of the modem and set it aside.



FIGURE B-2. Modem Partially Slid from Case

Ejecting the SIM tray

4. Using the tip of a closed pen, a paper clip, or PDA stylus, press the yellow button between the two cards.



FIGURE B-3. Tray Button

5. Slide the tray out of the slot.



FIGURE B-4. Empty SIM Tray

Inserting the SIM

6. Place the SIM into the tray and gently press to click it into place.



FIGURE B-5. SIM Tray with a SIM

7. Slide the tray back into the modem and gently press to click it into place.



FIGURE B-6. Inserting the SIM

8. Slide the modem back into the case.
9. Secure the back of the modem with the screws.

Appendix C. Configuring the Raven for PPP

The Raven template file configures the Raven to function as a serial server. As a serial server, the modem has an IP address, and port number (6785) for the Raven's RS232 port.

LoggerNet sends data via TCP/IP over the internet to the datalogger. The modem removes the data from the TCP packet and sends the data out the RS232 port to the datalogger. Returning data is put into a TCP packet by the modem and sent back to LoggerNet.

Settings in the Raven and datalogger (CR800, CR1000, and CR3000) can be changed to configure the RS232 serial ports for Point-to-Point (PPP) protocol. When configured as PPP, the Raven functions as a router, routing TCP/IP communications to the IP stack of the datalogger. PPP enables the datalogger to send/receive messages via email, HTTP, FTP to and from the datalogger, and allows concurrent communications between networked dataloggers and LoggerNet.

The default datalogger port number for PakBus/TCP communications is 6785. The datalogger will also respond to port 80 for HTTP, 23 for Telnet and 21 for FTP. These ports can be disabled in the dataloggers configuration.

NOTE

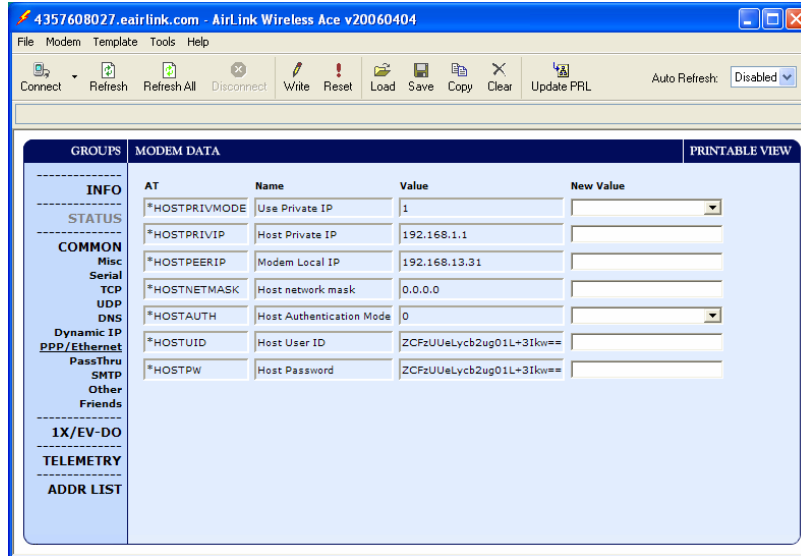
After the RS232 port on the modem has been configured as PPP, use ACE Manager with a TCP or UDP connection to establish communications with the modem. It may also be possible to connect with the modem through its RS232 port using the "SOS" mode.

Raven Settings for PPP Mode:

Download the current Raven EDGE ACE Manager template file from <http://www.campbellsci.ca/download.html>. Load the template into ACE Manager and make the following changes in steps 1 and 2 before writing them to the Raven modem.

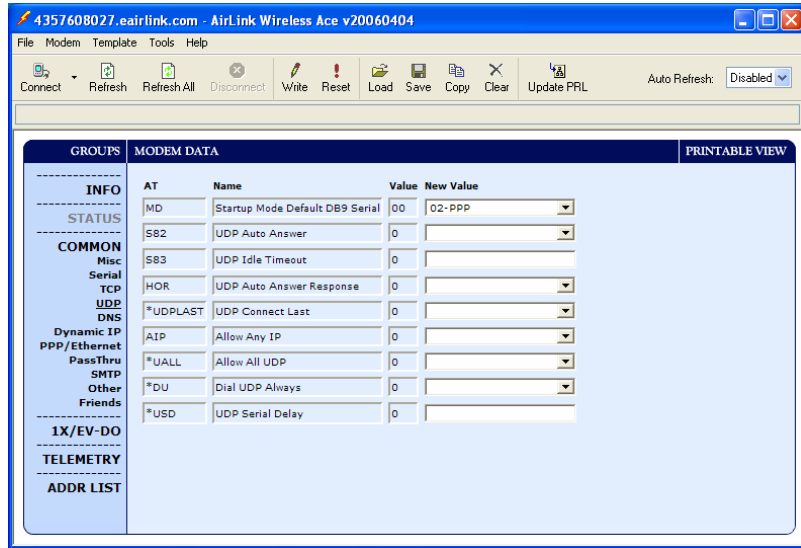
Use ACE Manager to configure the following PPP settings:

- HOSTPRIVMODE = 0
- HOSTPRIVIP = 192.168.1.1



Use WirelessAce to configure the following UDP setting:

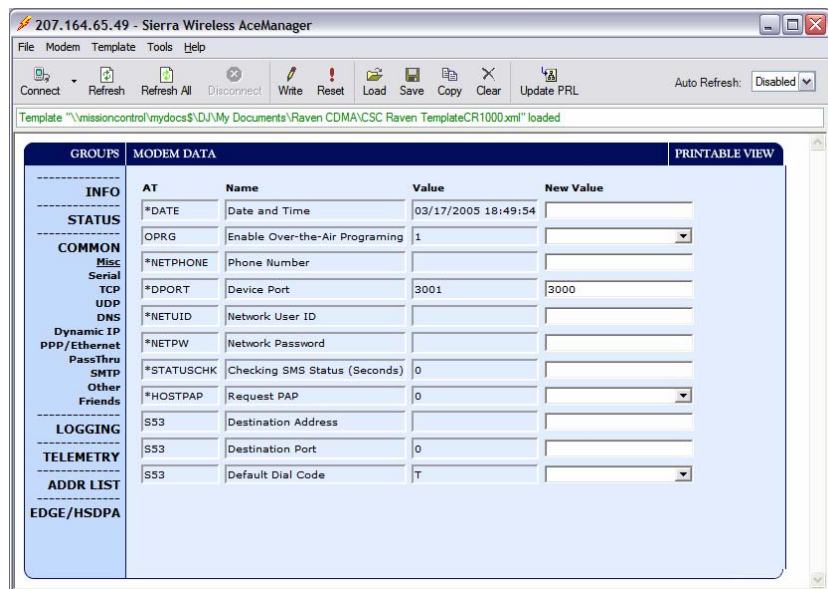
- MD = 02-PPP



Use AceManager to configure the following Misc setting:

DPort = 3000

This will allow the data to be passed through the modem when connected to the modem via PPP. If this change is not made any information coming through will be trapped by the modem as it thinks the information is for itself.



After the changes have been made, click the **Write** icon to save the changes in the modem.

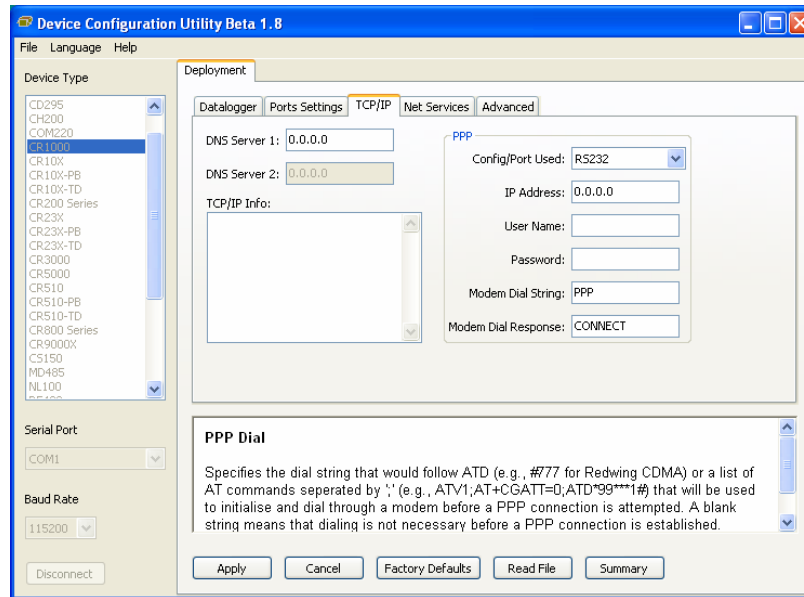
Click the **Reset** icon to restart the modem. The other ways to reset the modem are by pressing the reset button on the front of the modem or removing the power from the modem.

Click the **Disconnect** icon to terminate communications with the modem.

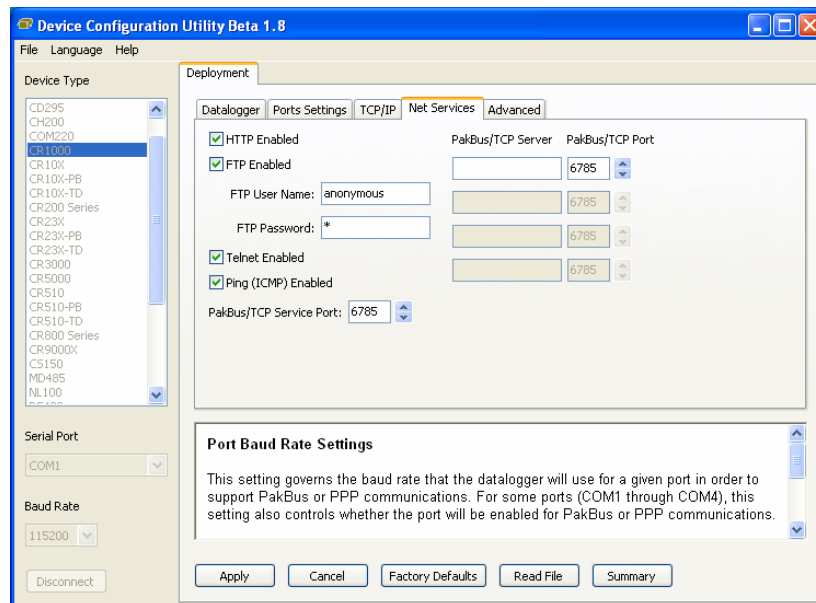
Datalogger Settings:

Using the Device Configuration Utility, configure the following setting on the TCP/IP tab:

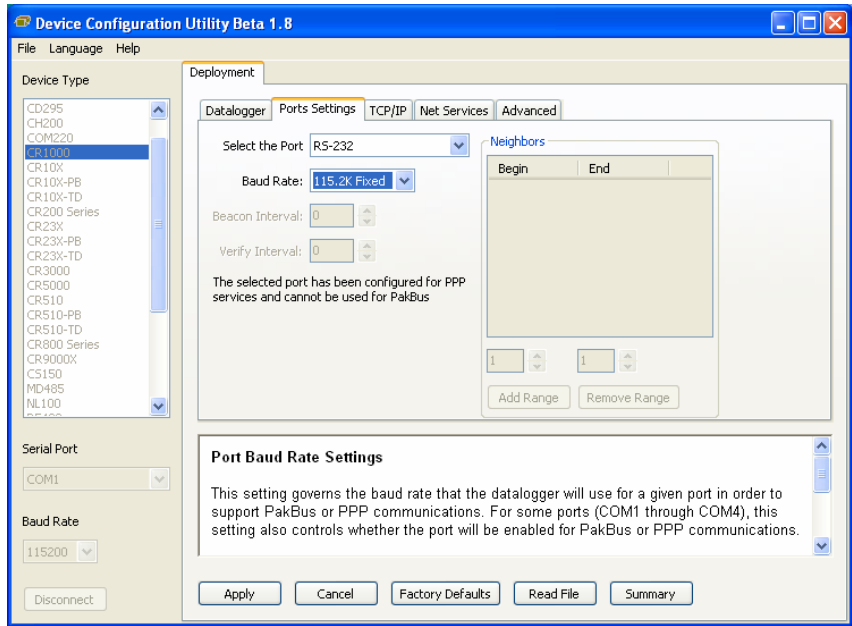
- Config Port Used = RS232
- IP Address = 0.0.0.0
- Modem Dial String = PPP
- Modem Dial Response = CONNECT
- User Name and Password are blank



Using the Device Configuration Utility, select the “Net Services” tab. The “PakBus/TCP Service Port” default is 6785. This is the “Port” number that will follow the “IP address” for LoggerNet to communicate with the datalogger.

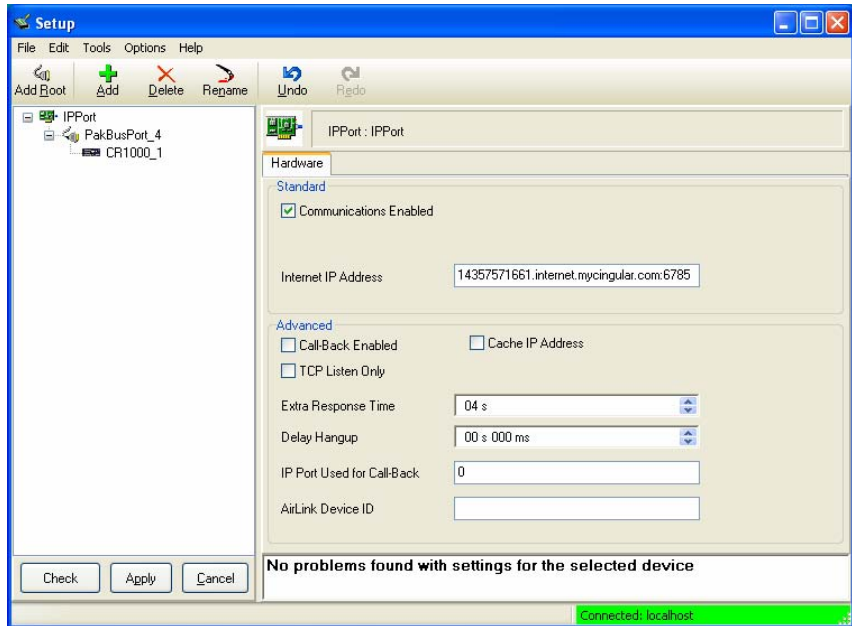


Using the Device Configuration Utility, fix the RS232 Baud Rate to “115200 Fixed” from the “Port Settings” tab.



LoggerNet Settings:

Enter the IP address of the Raven, and the PakBus/TCP Service Port number of the datalogger (e.g. 6785 as explained above).



Example CR1000 Program

The following example sends an email message when an alarm condition is True. Both the CR1000 and Raven modem must be configured as PPP as described above.

```

CR1000 Program Example to Send Email Message

'Main program variables
Public Batt, RefTemp, Temp

'declare Email parameter strings (as constants), Message String & Result Variable
Const ServerAddr="smtpauth.earthlink.net""207.69.189.201"
Const ToAddr="datalogger@hotmail.com"
Const FromAddr="datalogger@hotmail.com"
Const Subject="Email Message Test"
Const Attach=""
Const UserName="datalogger@earthlink.net"
Const Password="cr1000"
Const CRLF = CHR(13)+CHR(10)

Public Result as String * 100
Public AlarmTrigger As Boolean
Public Message As String * 250
Public EmailSuccess As Boolean

BeginProg
  Scan (1,Sec,3,0)
    Battery (Batt)
    PanelTemp (RefTemp,250)
    TCDiff (Temp,1,mV2_5C,1,TypeT,RefTemp,True ,0,250,1.0,0)
  NextScan

SlowSequence
  Scan(1,sec,1,0)
    If AlarmTrigger = False Then
      If Temp > 28 THEN AlarmTrigger = True
      If AlarmTrigger Then

        Message = "Warning!" + CRLF + CRLF
        Message = Message + "This is a automatic email message from the datalogger station " + Status.StationName + ". "
        Message = Message + "An alarm condition has been identified. "
        Message = Message + "The temperature is " + Temp + " degrees C." + CRLF + CRLF + CRLF
        Message = Message + "Datalogger time is " + Status.Timestamp

        EmailSuccess=EmailSend (ServerAddr,ToAddr,FromAddr,Subject,Message,Attach,UserName>Password,Result)

      EndIf
    EndIf
    If Temp < 28 then AlarmTrigger=False
  NextScan
EndProg

```

